



INSTALLATION INSTRUCTIONS

TruTEX™ & TritonTuff

INTRODUCTION

These instructions are written as a guide to be used when installing Tarkett Flooring. These instructions, combined with our adhesives and flooring products, create a system. Utilizing this system will ease the installation process and provide the customer with a completed product that will perform to its intended purpose. Always visit www.tarketthome.com for the most current installation and maintenance instructions. Technical videos and tip sheets are also available. Contact Tarkett Technical Services at (800)-899-8916 with any questions

GENERAL INFORMATION

- Carefully check flooring material for any defects. Contact your supplier immediately if any defect is found.
- TruTEX & TritonTuff floors are intended for indoor use only.
- All Tarkett products, flooring and adhesive must be stored in an indoor climate controlled space and be protected from the elements. Temperature must be maintained between 65°F and 85°F (18.3°C and 29.4°C) with a relative humidity 40% and 60%
- TruTEX & TritonTuff must be acclimated at room temperature between 65°F and 85°F (18.3°C and 29.4°C) for 48 hours before, during and after the installation.
- The Aqua Guard guarantee is valid when installed over concrete using the FLOATING INSTALLATION SYSTEM only
- Exposure to direct sunlight can result in products fading and creates excessive heat directly on the finished flooring and surrounding structure, which may result in movement. During peak sunlight exposure, the use of drapes or other window treatments are recommended.
- Rolls must be stored on horizontally on smooth surface supporting the entire width of the roll at all times prior to the installation.
- TruTEX & TritonTuff must be rolled on a sturdy core, design in or design out, when transporting to the jobsite.
- Protect rolls from damage.
- Remove all transitions, quarter round, baseboard molding or cove base prior to beginning the installation.
- Tarkett ProSheet™ Plus 3 is an approved underlayment for use with FiberFloor in on or above grade applications. Do not use ProSheet Plus 3 below grade.
- Floating Installations, undercut doorway jams and casings the thickness of the flooring.

WOOD SUBSTRATES

TruTEX & TritonTuff may be installed over single layer wood construction in **residential applications only**, when used with ProSheet Plus 3™ underlayment. Follow the detailed ProSheet Plus 3 installation instruction found at www.tarketthome.com

Wood subfloors must meet the following requirements:

- Wood joist or truss systems spacing must be a maximum of 16" on center when installing over single layer wood construction.
- Wood joist or truss systems spacing of 16"-19.2" is acceptable for double layer wood construction.
- Subfloor panels must be dry, sturdy, smooth, dimensionally stable and structurally sound.
- Subfloor panels must be 3/4" minimum thickness tongue and groove plywood or oriented strand board (OSB).
- Plywood subfloor panels must consist of a solid core (no voids).
- Subfloor panels must be exterior grade or classified as Exposure I.
- All suspended wood subfloors must have at least 18" of well-ventilated air space clearance above the ground. The ground under the crawlspace shall be covered with 10 mil or thicker polyethylene sheeting to reduce moisture vapor transmission.
- Offset subfloor panel joints by at least 16" so that four corners do not meet.
- Subfloor panels must be securely fastened to the joists and free from spring or deflection. If glue-nail procedures are required, use solvent free construction adhesives.

Wood subfloors not meeting the above requirements must be covered with 1/4" minimum thickness underlayment grade plywood. Tarkett recommended underlayment include:

APA Underlayment Grade Plywood A-C, B-C or C-C Plugged				
ACCU-PLY	SurePly	TECPLY	ULAY	C.S.A. (CanPly)

CONCRETE SUBSTRATES

- TruTEX & TritonTuff may be installed over properly constructed and prepared on-grade, above-grade or below-grade concrete subfloors.
- Concrete subfloors must be constructed as recommended by the American Concrete Institute's ACI 302.2 Guide for Concrete Slabs that Receive Moisture-Sensitive Flooring Materials.
- Prepare concrete subfloors according to ASTM F710 Standard Practice for Preparation of Concrete Floors to Receive Resilient Flooring. The surface of the concrete must be dry, clean, smooth, level and structurally sound. The slab must be swept, damp mopped and/or vacuumed to remove any dust. Any surface materials present such as loose paint, wax, grease, oil, adhesive residues, crayon, pen marking, etc., that may prevent a proper adhesion or migrate to the surface of the flooring causing discoloration, must be removed. Fill and level any cracks, construction joints, control joints, depressions, grooves or other irregularities with a high quality, non-shrinking, latex-fortified, cementitious patching compound. For substrates with high moisture content, contact the major patching compounds manufacture for detailed installation instructions.
- Tarkett TruTEX & TritonTuff when installed using the FLOATING INSTALLATION SYSTEM can be installed over minor concrete imperfections, up to a Concrete Surface Profile of 2 (CSP2).
- Do not install Tarkett TruTEX & TritonTuff flooring over expansion joints, or other moving joints in the substrate. These joints must be respected and should not be filled with products that are not intended for that purpose. Contact an expansion joint cover manufacturer to meet specific flooring conditions.

Tarkett North America

Technical Services Department
30000 Aurora Road
Solon, OH 44139
888-639-8275 Fax 440-498-0025
Resilient.technicalsupport@tarkett.com

www.tarketthome.com



INSTALLATION INSTRUCTIONS

TruTEX™ & TritonTuff

- Moisture testing of concrete subfloors must be performed in accordance with ASTM F1869 Standard Test Method for Measuring Moisture Vapor Emission Rate of Concrete Subfloor Using Anhydrous Calcium Chloride and ASTM F2170 Standard Test Method for Determining Relative Humidity in Concrete Floor Slabs Using in situ Probes. When installing TruTEX & TritonTuff using the FLOATING INSTALLATION SYSTEM do not install if the values are greater than 5 lbs. /1000 ft²/24hrs per ASTM F1869 or 85 %RH per ASTM 2170. When installing TruTEX & TritonTuff using the FULL SPREAD-PERMANENT or RELEASABLE APPLICATION refer to the moisture limitations on the Q Bond One or 959 Vinyl and Plank adhesive pail label. If the tests results exceed the limitations, the installation must not proceed until the problem has been corrected.
 - Tarkett does not recommend or warrant any particular product or procedure for the remediation of high moisture in concrete substrates. Several companies manufacture products suitable for moisture remediation. We suggest you refer to the current ASTM F 710 Standard Practice for Preparing Concrete Floors to Receive Resilient Flooring and ASTM F 3010 Standard Practice for Two Component Resin Based Membrane-Forming Moisture Mitigation Systems for Use Under Resilient Flooring Systems.
 - pH testing of concrete subfloors must be performed in accordance with ASTM F710 Standard Practice for Preparing Concrete Floors to receive Resilient Flooring. When installing TruTEX & TritonTuff using the FLOATING INSTALLATION SYSTEM the concrete surface pH should be between 7-9. When installing TruTEX & TritonTuff using the FULL SPREAD-PERMANENT refer to the substrate pH limitations on the Q Bond One or 959 Vinyl and Plank adhesive pail label.

ADDITIONAL SUBFLOOR GUIDELINES

- Many installations over existing floors produce satisfactory results. However, their success is dependent upon the condition of the existing floor covering. Installing over existing flooring increases the possibility of indentations and telegraphing of the old floor. Note: The final decision to cover an existing floor with new flooring rests with the flooring contractor and/or installer. Tarkett will not accept responsibility for floor failures where the condition, type or improper preparation of the existing floor is the cause for the failure. When installing TruTEX & TritonTuff over an existing flooring follow the recommended guidelines below.
 - Ceramic, Porcelain and Natural Stone tiles must be smooth, even and well bonded with a grout line depth less than 1/16" (.625). If grout joint depth exceeds the maximum allowable depth, fill with Portland based patching compound following manufacturer's guidelines. Installing TruTEX & TritonTuff over existing Ceramic, Porcelain and Natural Stone tiles is only recommended when using the floating installation method. If a glue-down installation method is desired contact Tarkett Technical Services.
 - Resilient Vinyl floors must be smooth, even, non-cushioned and well bonded to the substrate.
 - Strip Wood Hard Wood Floors must be smooth, even, flat, with a maximum gap width between boards of 1/16" (.625). Installing TruTEX & TritonTuff over Strip Wood Floors is only recommended when using the floating installation method.
- Heated flooring systems must be installed 2" below the concrete subfloor and the operating temperature must not exceed 85°F (29.4°C). During installation, lower the radiant heated floor temperature to a minimum 65° F (18.3° C). This temperature should be maintained for at least 24 hours before, during and 48 hours after completion of the installation. Gradually increase the temperature in increments of 5°F every 24 hours but do not exceed 85°F (29.4°C).
- Residual adhesives should be mechanically removed. Do not use chemical adhesive removers or solvents. Always follow RFCI's Recommended Work Practices for Removal of Resilient Floorcoverings. Caution: Some resilient flooring products and adhesives contain "asbestos fibers" and special handling of this material is required.
- Refer to ASTM F2419 Standard Practice for Installation of Thick Poured Gypsum Concrete Underlayments and Preparation of the Surface to Receive Resilient Flooring for guidelines when pouring gypsum underlayments or preparing for use as an underlayment under Tarkett products. Follow the Gypsum Underlayment manufacturer's recommendations for proper application and preparation.

SUBSTRATE PREPARATION

- All substrates must be dry, clean, structurally sound, smooth and free from all existing adhesive residues.
- The substrate must be flat within 1/8" in 8' (3.17mm in 2.4m).
- Fill and level concrete cracks, construction joints, control joints, depressions, grooves and other irregularities. Use a latex fortified, cementitious patching compound and follow the manufactures recommendation for preparing.
- Sweep and vacuum or damp mop substrate to remove all dust and debris.
- DO NOT SAND, DRY SWEEP, DRY SCRAPE, DRILL, SAW, BEADBLAST OR MECHANICALLY CHIP OR PULVERIZE EXISTING RESILIENT FLOORING, BACKING, LINING FELT OR ASPHALTIC "CUT-BACK" ADHESIVE OR OTHER ADHESIVE.
- These products may contain either asbestos fibers or crystalline silica. Avoid creating dust. Inhalation of such dust is a cancer and respiratory tract hazard. Smoking by individuals exposed to asbestos fibers greatly increases the risk of serious bodily harm. Unless positively certain that the product is a non-asbestos containing material, you must presume it contains asbestos. Regulations may require that the material be tested to determine asbestos content. Various federal, state and local government agencies have regulations governing the removal of in-place asbestos containing material. If you contemplate the removal of a resilient floor covering structure that contains (or is presumed to contain) asbestos, you must review and comply with all applicable regulations. Refer to the current edition of the Resilient Floor Covering Institute (RFCI) "Recommended Work Practices for Removal of Resilient Floor Coverings" for detailed information and instructions for removal of resilient floor coverings
- "Refer to the Resilient Floor Covering Institute (RFCI), Recommended Work Practices for Removal of Existing Resilient Flooring for best work practices" located on RFCI's website at www.rfci.com
- Prior to removing, an existing floor follow the RFCI Recommended Work Practices for Removal of Resilient Floor Coverings (unless state or local law requires other measures). If there are visible indications of mold or mildew or the presence of a strong musty odor in the area where resilient flooring is to be removed or installed, the source of the problem should be identified and corrected before proceeding with the flooring work.
- The EPA mold guidelines are contained in two publications "A Brief Guide to Mold, Moisture and Your Home" (EPA 402-K-02-003) and "Mold Remediation in Schools and Commercial Buildings" (EPA 402-K-01-001). Appendix B of the "Mold Remediation in Schools and Commercial Buildings" publication describes potential health effects from exposure to mold, such as allergic and asthma reactions and irritation to eyes, skin, nose and throat. These publications can be located on EPA's Website at www.epa.gov/iaq/molds/

Tarkett North America

Technical Services Department
30000 Aurora Road
Solon, OH 44139
888-639-8275 Fax 440-498-0025
Resilient.technicalsupport@tarkett.com

www.tarkett.com



INSTALLATION INSTRUCTIONS

TruTEX™ & TritonTuff

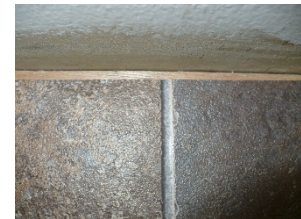
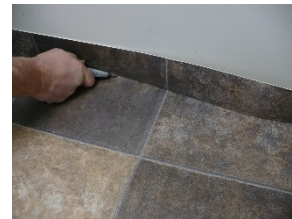
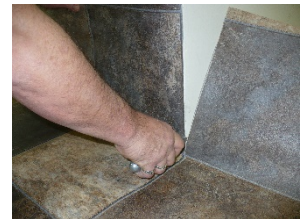
GETTING STARTED

- TruTEX & TritonTuff floors may be installed using the floating or full spread, permanent or releasable installation method.
- Use Q-Bond One or 959 Vinyl Tile and Plank Adhesive using a 1/32"x1/16"x1/32" U notch trowel allowing the adhesive to reach a semi-wet state with adhesive transfer to the finger with a light touch. For the releasable method use Q Bond One only
- TruTEX & TritonTuff floors are intended for indoor use only.
- Do not install cabinets over TruTEX & TritonTuff if the FLOATING INSTALLATION SYSTEM is used.
- A minimum 1/4" (6.3mm) expansion space is required around all walls and vertical objects. Allow a 1/2" (12.7mm) expansion space for installations over wood substrates that may be effected by moisture or external temperature and humidity fluctuations (i.e. crawlspaces, mobile homes)
- If distortions are noticed in the flooring prior to installation, reverse roll the flooring on a core and allow it to remain for 15 minutes to remove the distortions.
- Inspect TruTEX & TritonTuff™ for visible defects and damage before and during installation. Do not install damaged material. Tarkett will not accept responsibility for claims on flooring installed with obvious defects. Contact your supplier immediately if a defect is found.

INSTALLATION

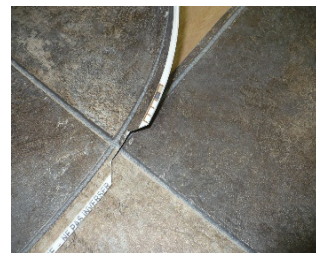
FLOATING INSTALLATION SYSTEM

- 1) Measure the room and precut the flooring allowing 3" extra material for trimming.
 - a) Unroll the flooring and position in the room so the pattern is aligned squarely with walls.
 - b) Allow flooring to relax for 20 minutes. Material shall be lying completely flat before fitting.
 - c) undercut doorway jams and casings the thickness of the flooring
- 2) Using a sharp, sturdy utility knife, make relief cuts at inside and outside corners.
- 3) Trim the flooring around the edges of the room.
 - a) When fitting flooring, leave a 1/4" space between flooring and all verticals (i.e. walls, cabinets, pipes, etc.). Leave a 1/2" gap for floors installed over wood substrates that have a potential of being exposed to high moisture levels (i.e. crawl spaces, mobile homes)
- 4) When installing in a full bathroom, the flooring may be fit net against the bathtub or shower stall. Apply S 860 Seam Tape along the front of the tub or stall. Remove the release liner and fit the flooring against the tub or stall. The remaining walls and toilet flange must have the 1/4" space between the flooring. Apply a bead of silicone caulking in front of bathtub.
- 5) Slide flooring underneath the undercut door casings, maintain the 1/4" expansion gap.



SEAMING – FLOATING INSTALLATION SYSTEM

- 1) After first piece of flooring is positioned, cut second piece of flooring. Be sure to allow extra material for pattern match.
- 2) Overlap seam edges and obtain exact pattern match.
- 3) Place masking tape at seam overlap to prevent flooring from moving.
- 4) After second piece of flooring has been fit, remove masking tape from seam area. Mark the substrate along factory edge with a pencil. Realign the match and replace the masking tape.



Tarkett North America

Technical Services Department
 30000 Aurora Road
 Solon, OH 44139
 888-639-8275 Fax 440-498-0025
 Resilient.technicalsupport@tarkett.com

www.tarkett.com

INSTALLATION INSTRUCTIONS

TruTEX™ & TritonTuff

- 5) Lay a straight edge along center of seam overlap or grout line. Using the straight edge as a guide, cut through both sheets of flooring with a sharp, sturdy utility knife held to produce a vertical cut. Do not tilt knife blade. When installing over an existing floor, do not cut into the existing floor.
- 6) Lift top edge of flooring and carefully remove bottom salvage and the masking tape. Place S-875, floating seam tape, position the S-875 and remove the release liners, position flooring and roll seam area thoroughly.
- 7) Seal seams with Tarkett DT-65 Seam Sealer. Protect seam from traffic for a minimum of 8 hours.



FULL SPREAD - PERMANENT APPLICATION

- 1) Follow the procedures outlined under the FLOATING INSTALLATION SYSTEM above except TruTEX & TritonTuff™ can be cut net to vertical surfaces; do not cut too tight which may cause a compression fit.
- 2) Seams are double-cut prior to application of adhesive. Double-cut seam dry. Mark substrate along seam edge with pencil. Do not contaminate seam edge with the lead in the pencil. Fold or tube flooring back to expose entire seam area.
- 3) Apply Tarkett S-860 Seam Tape to the substrate, so that it is centered over pencil line.
- 4) Apply Q-Bond One or 959 Vinyl and Plank adhesive evenly over the exposed substrate and seam tape with a 1/32" deep x 1/16" wide x 1/32" apart notched trowel. Remove releaseliner from seam tape. Immediately place flooring into adhesive. Position seam and roll with a 75 lb. (34 kg) sectional floor roller.



SEAM SEALING

- 1) All seams on Tarkett TruTEX & TritonTuff™ must be chemically sealed. Detailed application instructions are in the DT-65 kit.
 - a) TARKETT DT-65 SEAM SEALER – For use on all products with low gloss vinyl or urethane finish.
 - b) Seal seams with Tarkett DT-65 Seam Sealer. Protect seam from traffic for a minimum of 8 hours.

Tarkett North America

Technical Services Department
 30000 Aurora Road
 Solon, OH 44139
 888-639-8275 Fax 440-498-0025
 Resilient.technicalsupport@tarkett.com

www.tarkett.com



INSTALLATION INSTRUCTIONS

TruTEX™ & TritonTuff

FINISHING THE JOB

- Carefully inspect for any fullness in the flooring. Re-trim if necessary. Flooring shall be laying flat. It is recommended that all exposed edges be covered. Install wood moldings or cove base around the perimeter to cover the space. Do not fasten or nail moldings through TruTEX & TritonTuff™. Fasten into the wall.
- Use transition moldings at doorways or where the new flooring meets an existing floor. Do not nail or fasten the molding through the flooring. Transition moldings shall be fastened to the substrate. If a transition molding must be installed directly on top of flooring, mark on the flooring where each fastener will be positioned, and drill or cut a hole larger than the size of the fastener. This is necessary when using the Floating Installation Method.
- Do not move or roll furniture and appliances directly over floor. Always place plywood or hardboard panels on floor when moving furniture or appliances.
- Furniture legs shall be equipped with proper size rests to prevent permanent indentations.



CARE AND MAINTENANCE

- Check, furniture to be sure the legs are equipped with proper rests and are of sufficient size to prevent permanent indentations.
- Sweep and /or vacuum any dirt or debris that can abrade or scratch the floor. Use a soft brush, dust mop or vacuum.
- Light daily sweeping or vacuuming will help maintain the floors original gloss by removing any grit particles, which can affect the normal gloss.
- Wipe up spills promptly and thoroughly with a clean, damp cloth. Spills are easier to remove if wiped up immediately.
- When necessary, wash the floor with a neutral floor cleaner.
- Use non-staining walk-off mats at outside entrances to prevent dirt and debris from being tracked onto the floor. Discoloration of the flooring may occur from rubber backings and dyes used in floor mats and rugs.
- As with other household furnishings, repeated exposure to direct sunlight may cause bleaching, fading or discoloration. When possible, close drapes or blinds during peak sunlight hours to block direct sunlight.

Tarkett North America

Technical Services Department
30000 Aurora Road
Solon, OH 44139
888-639-8275 Fax 440-498-0025
Resilient.technicalsupport@tarkett.com

www.tarketthome.com