



MIGRATIONS[®] BioBased Tile[®] T3500 basalt black,
T3501 platinum gray, T3502 pumice gray,
T3503 ashen gray, T3524 red berry

SOLUTION SPOTLIGHT

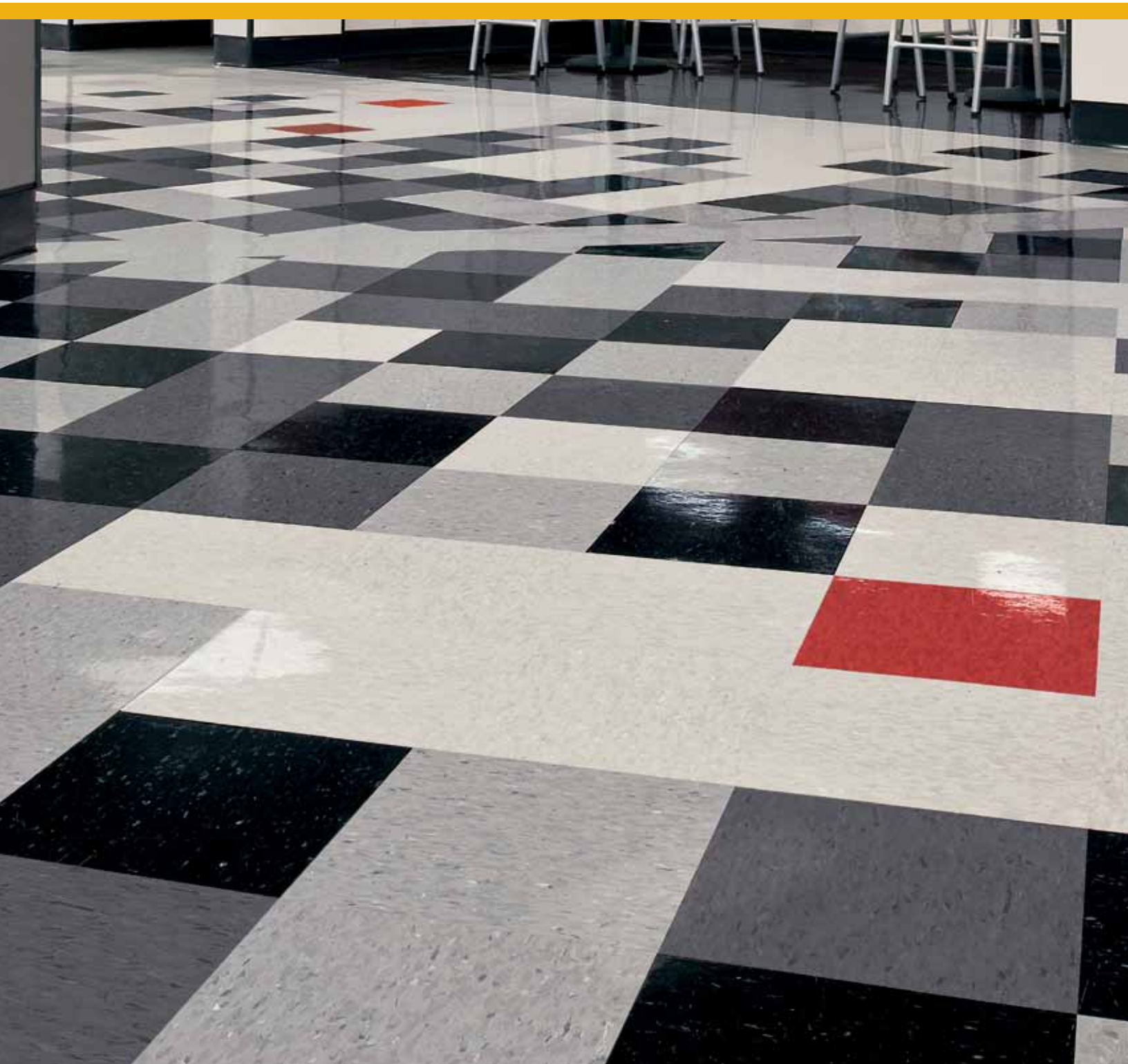
Brownfield High School – Brownfield, TX

linoleum ■ biobased tile[®] ■ lvt ■ commercial hardwood ■ sheet ■ commercial laminate ■ vct ■ specialty flooring ■ accessories

biobased tile[®]

“We looked for a product that was durable and maintainable, as well as having a sustainable story – that is the way we evaluate all of the materials for our projects. We tested several products and MIGRATIONS® was the clear winner.”

Paul LaBrant
Registered Interior Designer, Parkhill, Smith and Cooper





MIGRATIONS® BioBased Tile® – It's the clear winner!

At first glance, the retro floor design in the cafeteria and main corridors at Brownfield High School in Texas looks like many other floors in schools across the nation.

But it's not.

The floor design is MIGRATIONS BioBased Tile, a sustainable, affordable flooring product that has more than five times greater resistance to impact and more than two and a half times greater resistance to cracking from uneven subfloors than standard composition tile. The school wanted to replace the existing flooring, and chose MIGRATIONS with the help of the design firm of Parkhill, Smith and Cooper.

"We looked for a product that was durable and maintainable, as well as having a sustainable story – that is the way we evaluate all of the materials for our projects," according to Paul LaBrant, Registered Interior Designer. "We tested several products and MIGRATIONS was the clear winner."

The 12" x 12" BioBased Tile in gray, black and red looks no worse for wear since its installation in July, 2009. Brian Paiva, Director of Maintenance at Brownfield High School, is really impressed with the performance and the maintenance of the product.

"It is performing extremely well, considering how hard it is used every day by hundreds of students," said Paiva. "It's very easy to maintain, and looks great."

Installing MIGRATIONS in Brownfield High School was clearly a win for all. The students get a cleaner, "greener" environment and the school gets a product that is more durable than standard composition tile, but is just as easy to maintain. And, from this single project, 3,326 pounds of waste have been diverted from landfills and energy and natural resources equivalent to 86 gallons of gasoline have been saved.





SOLUTION SPOTLIGHT

SEGMENT:

Education

PROJECT:

Brownfield High School

LOCATION:

Brownfield, TX

DESIGNER/ARCHITECT:

**Parkhill, Smith and
Cooper**

ARMSTRONG FLOORING:

BioBased Tile®

PRODUCT LINES/SKUS:

MIGRATIONS®

T3500 basalt black

T3501 platinum gray

T3502 pumice gray

T3503 ashen gray

T3524 red berry

INSTALLATION DATE:

July 2009

MIGRATIONS BioBased Tile is made with BioStride®, a polymer which contains biobased, rapidly renewable ingredients and reduces reliance on petroleum-based products. It is compliant to California Section 01350, is FloorScore™ certified and is LEED® eligible.

Visit armstrong.com

Call 1 877 ARMSTRONG

F-8362-310

Printed in the United States of America.

FloorScore™ is a trademark of the Resilient Floor Covering Institute. LEED® is a registered trademark of the United States Green Building Council. All trademarks owned by AWI Licensing Company. LEED® and the Armstrong logo are registered in the United States and Canada.

© 2010 AWI Licensing Company

Armstrong®
COMMERCIAL FLOORING